

INSIDE

Real Estate | Classified | Automotive

monster[®]Jobs
INSIDE

Sunday, February 17, 2019

Real Estate

Section
D

New Homes • Condos • Townhomes • Developments • Resort Property • Mobile Homes • Resale Property • Rentals

A Weekly Advertising Supplement to the Daily Breeze Classifieds

Featured New Homes

ONE SOUTH

Urban beach living now selling in Redondo

Redondo Beach is a tranquil oasis tucked away within a sprawling metropolis. A coastal community that's alive and vibrant, without the commotion of the big city, is the inspiration of our urban beach address. One South, a new mixed-use development, provides a mix of luxury residences and considered retail options that mirror the character and charm found throughout the area.

Ideal for new homeowners and young families, this community provides a sensible coastal option in the South Bay. One South is located at 1920 Pacific Coast Highway and is zoned for the

Redondo Beach Unified School District. Community features including bike and surfboard storage consider the lifestyles of residents, while green aspects such rain-water capture for community landscaping consider the environment. On-site art installations by sculptor Mike Stutz and artist Britt Tobia infuse local culture and flair, while the exterior elevations enliven the area with a mix of beach-inspired and contemporary materials.

One South considers the entire living experience and allows homeowners to enjoy their surroundings, inside and out. Residence interiors feature the latest in designer finishes includ-

ing quartz countertops, waterfall-edge kitchen islands and stainless-steel appliances, as well as memorable architectural elements that include oversized windows, loft-height double volume ceilings, and select spiral staircases. Landscaped courtyards inspired by the walkable streets of the South Bay, give residents a lush outdoor environment to enjoy upon entering and exiting the community.

Three collections of homes, including flats and townhomes, make up this 52-residence community, each with

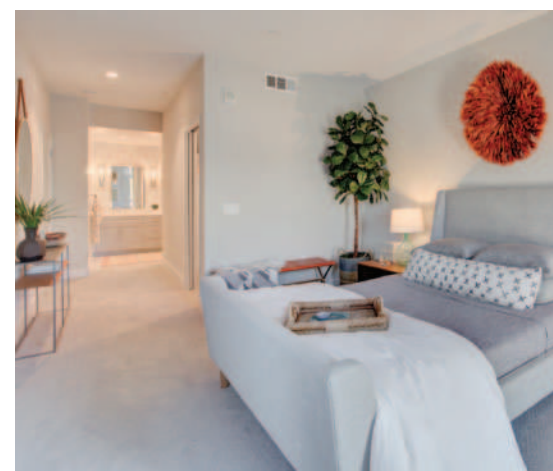
something unique to offer buyers. The one-bedroom collection features homes that range in size from 883 to 1,420 square feet on one or two levels of living. Collection extras include dedicated offices, outdoor spaces, mezzanines and open-concept layouts. The two-bedroom homes feature both flats and a townhome, ranging in size from 1,230 to 1,785 square feet. Large master suites, mezzanines and rooftop decks highlight this collection. Lastly, the three-bedroom townhomes, sized at 1,749 and 1,984 square feet are

the community's largest plans. These townhomes offer a third-level dedicated to the master suite and expansive rooftop decks. Those looking to experience the community before they purchase, can make an appointment to see two fully-furnished model homes – a tri-level or a large two-bedroom plan with a den, both featuring rooftop decks.

Along Pacific Coast Highway and located at the front of the community, One South welcomes its three retail tenants: F45 Training, an innovative new gym experience offering immer-

sive 45-minute workouts; Burgerim, the fast-food chain responsible for gourmet slider-style burgers, and MESH, a co-working space that offers a childcare component and coffee bar.

Recently celebrating its community grand opening in late January 2019, One South has already welcomed several new homeowners and boasts 25% sold to date. Interested buyers can visit liveonesouth.com, to register for additional details, and begin the prequalification process with the community's two preferred lenders.



52 RESIDENCES • 1, 2 & 3 BEDROOMS • CONDOS & TOWNHOMES • 869 - 1,945 SQ FT

One South is officially open and already 25% sold!

Stop by our sales office now open on PCH for a look inside our models and community tour!

liveonesouth.com



888.705.9970 | 1914 Pacific Coast HWY | Redondo Beach, CA 90277

CAPE POINT
DEVELOPMENT, LLC

Prices, terms, promotions, features, options, floor plans, elevations, designs, specifications, square footages, and descriptions are subject to change without notice. Prices shown refer to the standard house and the plan and do not include any optional features, upgrades or lot premiums. Square footages are approximate and may vary in construction and depending on the standard measurement used. EHOFF II Redondo Beach, LLC (Owner) reserves the right to make changes to its home plan and the project design and layout. Any information such as but not limited to community or neighborhood benefits, features, descriptions, open spaces, and school information are not guaranteed, are subject to change or modification at any time. Owner does not guarantee that any specific level of energy utility costs or savings will be achieved or maintained. All renderings and floor plans are an artist's conceptual drawings and will vary from the actual plans and homes as built. Home images, colors and sizes are approximate for illustration purposes only and may not represent the standard homes in the community. Images show model homes displaying options/upgrades and upgraded landscaping which may be available at predetermined stages of construction for additional charges. Models also display many decorator items and furniture which are not available for purchase. Visit the community or speak to our representative for additional important disclosures for the community and the home. Images do not reflect any racial preference. Maps may not be to scale. Equal Housing Opportunity. Information sources: <http://www.visitredondo.com/> and <http://thewaterfrontredondo.com/>. Offered via Terra Nova Professionals CA BRE 0142554.