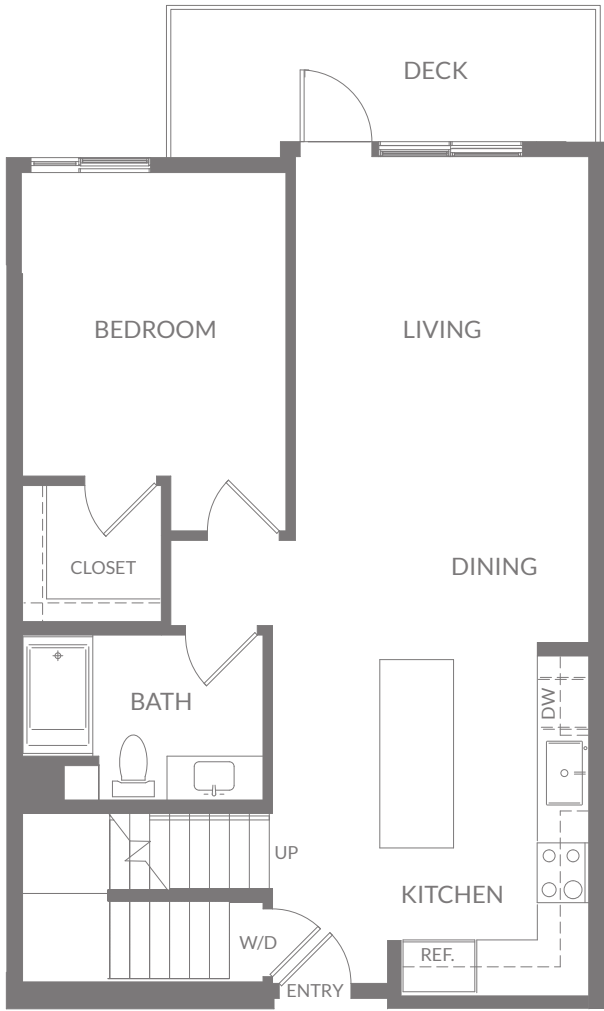


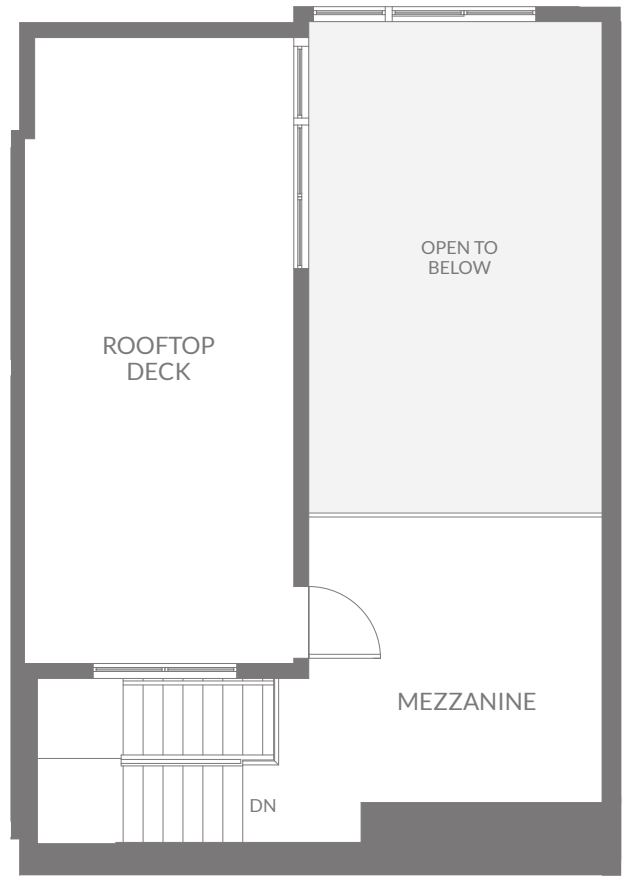
Residence AM1

ONE SOUTH

- Condo
- 1 Bed + Mezzanine / 1 Bath
- 1,031 sq. ft.
- 1 unit available



FIRST FLOOR



MEZZANINE / ROOF

1914 Pacific Coast HWY | Redondo Beach, CA 90277 | liveonesouth.com



CAPEPOINTDEV.COM

CAPE POINT
DEVELOPMENT, LLC

Prices, terms, promotions, features, options, floor plans, elevations, designs, specifications, square footages, and descriptions are subject to change without notice. Prices shown refer to the standard house and the plan and do not include any optional features, upgrades or lot premiums. Square footages are approximate and may vary in construction and depending on the standard measurement used. EHOFF II Redondo Beach, LLC ("Owner") reserves the right to make changes to its home plan and the project design and layout. Any information such as but not limited to community or neighborhood benefits, features, descriptions, open spaces, and school information are not guaranteed, are subject to change or modification at any time. Owner does not guarantee that any specific level of energy utility costs or savings will be achieved or maintained. All renderings and floor plans are an artists' conceptual drawings and will vary from the actual plans and homes as built. Home images, colors and sizes are approximate for illustration purposes only and may not represent the standard homes in the community. Images show model homes displaying options/upgrades and upgraded landscaping which may be available at predetermined stages of construction for additional charges. Models also display many decorator items and furniture which are not available for purchase. Visit the community or speak to our representative for additional important disclosures for the community and the home. Images do not reflect any racial preference. Maps may not be to scale. Equal Housing Opportunity.